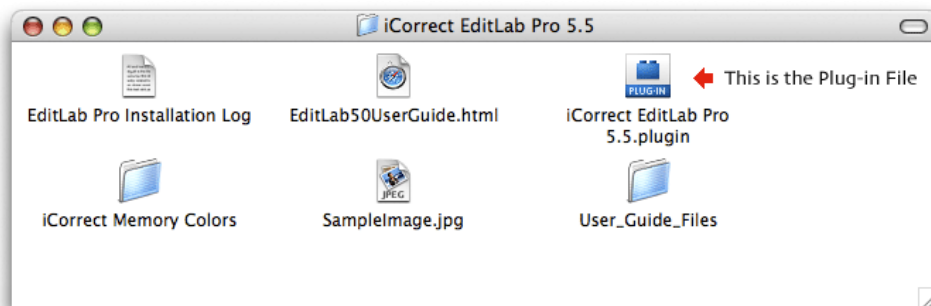


Photoshop Installation Instructions for iCorrect 32/64 bit Plug-ins: Portrait 2.0, and EditLab Pro 6.0. (Macintosh 32/64 bit versions) (Photoshop CS4, CS5, CS6, & CC).

(Note: Instruction screenshots and file folder names will reference iCorrect EditLab Prot but also apply to iCorrect Portrait 2.0)

1. Unzip the iCorrect EditLab Pro 6.0 zip file

2. Look at the unzipped files. The User Guide may be viewed by opening the file named ***EditLab60UserGuide.html*** with a web browser. The plug-in file ***iCorrect EditLab Pro 6.0 plugin*** must be copied into an application's **Plug-Ins/Filters folder**, as described in step 3. **Note: Photoshop CS6 and CC Mac versions are available only in 64 bit so only install the iCorrect EditLab Pro 64 bit plug-in.**



3. The ***iCorrect EditLab Pro 6.0 plugin*** plug-in file must be copied into the **Plug-Ins/Filters** folder of Photoshop. **Note: Photoshop CS6 & CC do not have a Filters sub-folder so install the 64 bit .8bf file in the Plug-ins Folder.**

